

# Pressure Switch

## Single Pressure / Dual Pressure

### Features

- For use with fluorinated refrigerant as well as with air and water (Allowable Fluid Temp : -20 °C ~ +120 °C)
- Type High Pressure Switch for Universal application
- Micro-switch ensures reliable switching
- With SPDT contact mechanism
- Various contact functions available
- Mounting bracket supplied as standard
- Several models available in drip-proof enclosure for marine applications or in explosion-proof enclosure for special applications



### Specification

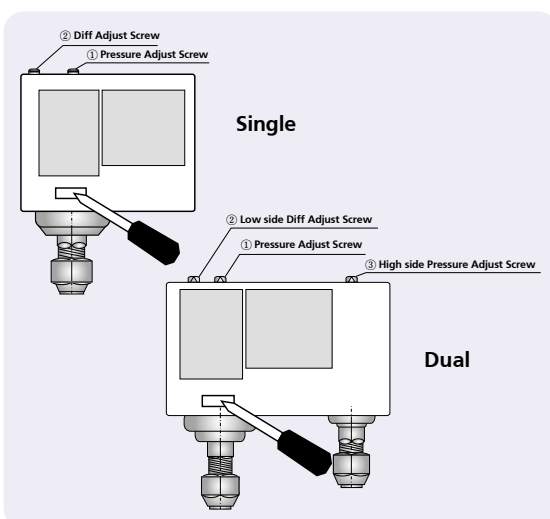
#### Single Pressure Switch

Model No.	Pressure Range		Differential Range		Factory Setting(On/Off)		Max. Bellows Pressure		Switch Action	Pressure Connection	Weight
	Kgf/cm <sup>2</sup>	psig	Kgf/cm <sup>2</sup>	psig	Kgf/cm <sup>2</sup>	psig	Kgf/cm <sup>2</sup>	psig			
<b>Auto Type</b>											
PK-202	-0.2 to 2	-8 inHG to 29	0.25 to 1.5	3 to 22	0.5/1	7/15	5.5	80	Auto Type SPDT opens High/Low	1/4" Flare nut Option : 3/6" Copper capillary tube with 1/4" flare nut	0.42kg
PK-203	-0.5 to 3	-20inHG to 43	0.35 to 2	5 to 30	0.5/1.5	7/21	11	160			
PK-206	-0.5 to 6	-20inHG to 87	0.6 to 4	9 to 58	2/3	29/43	16.5	240			
PK-210	1 to 10	15 to 145	1 to 3	15 to 43	4/6	58/87	16.5	240			
PK-215	3 to 15	44 to 218	2 to 5	30 to 72	7/9	102/130	40	580			
PK-220	5 to 20	73 to 290	3 to 5	43 to 72	12/15	174/217	40	580			
PK-230	5 to 30	73 to 435	3 to 10	43 to 145	15/20	217/290	40	580			
<b>Manual Type</b>											
PK-202M	-0.2 to 2	-8 inHG to 29	0.25 to 1.5	3 to 22	0.5/1	7/15	5.5	80	SPDT Manual Reset Trip on Pressure rise	1/4" Flare nut Option : 3/6" Copper capillary tube with 1/4" flare nut	0.42kg
PK-203M	-0.5 to 3	-20inHG to 43	0.35 to 2	5 to 30	0.5/1.5	7/21	11	160			
PK-206M	-0.5 to 6	-20inHG to 87	0.6 to 4	9 to 58	2/3	29/43	16.5	240			
PK-210M	1 to 10	15 to 145	1 to 3	15 to 43	4/6	58/87	16.5	240			
PK-215M	3 to 15	44 to 218	2 to 5	30 to 72	7/9	102/130	40	580			
PK-220M	5 to 20	73 to 290	3 to 5	43 to 72	12/15	174/217	40	580			
PK-230M	5 to 30	73 to 435	3 to 10	43 to 145	15/20	217/290	40	580			

#### Dual Pressure Switch

Model No.	Low Pressure Range		Low Differential Range		High Pressure Range		High Differential Range		Switch Action	Pressure Connection	Weight
	Kgf/cm <sup>2</sup>	psig	Kgf/cm <sup>2</sup>	psig	Kgf/cm <sup>2</sup>	psig	Kgf/cm <sup>2</sup>	psig			
PK-303	5 to 30	73 to 435	3 to 10	43 to 145	8 to 30	116 to 435	4 fixed	58 fixed	LP SPDT Auto Reset HP SPDT User Select Auto or Manual Reset	1/4" Flare nut Option : 3/6" Copper capillary tube with 1/4" flare nut	0.61kg
PK-303M											
PK-306	-0.5 to 6	-20 inHG to 87	0.6 to 4	9 to 58	8 to 30	116 to 435	4 fixed	58 fixed			
PK-306M											
PK-606											
PK-606M											

### Mounting / Adjustment / Wiring



#### Mounting

- 1) Controls may be mounted in any position.
- 2) Controls may also be mounted to wall surface or panel board by 4 mounting holes provided in the back of the case.
- 3) Standard bracket regularly supplied. Caution : tapped holes are only for use with a mounting bracket.

#### Important Notice

Manual operation (tripping switch)  
The switch can be manually operated by drilling the bellows tab as shown, Operating the control all other point.

Will cause control damage and void the warranty.

#### Adjustment

##### 1) Automatic Reset Model

Range pointer indicates cut-in and cut-out setting. Whichever Higher depending on terminal selection for application.

Range adjusting screw ① releases or lowers both cut-in and cut-out setting on equal amount.

Differential adjusting screw ② changes cut-in and cut-out point whichever lower.

##### 2) Manual Reset Model

On the all manual reset models the range can be adjusted with screw ①. There is no differential adjustment.

#### Wiring

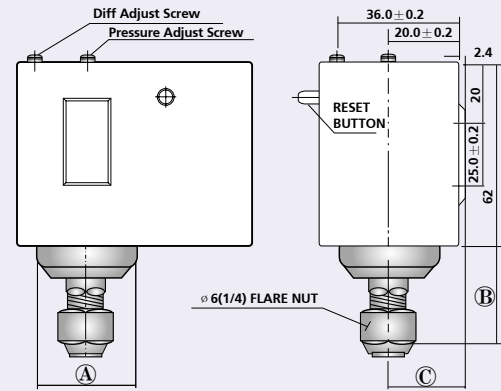
In the above diagram each arrow marking indicates a direction of pressure rise.

## Drawing

### Single Pressure Switch

Unit : mm

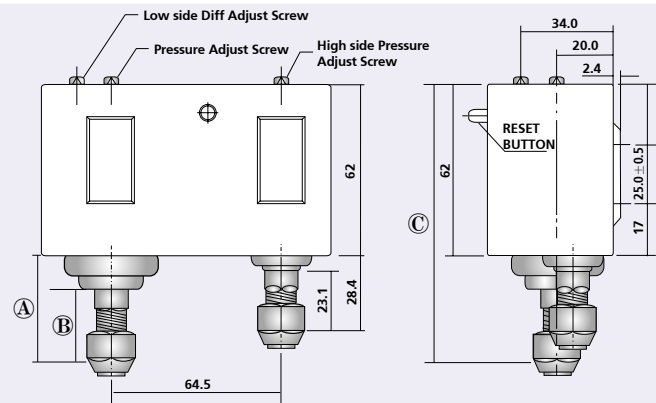
Model No.	A	B	C
PK-202/202M	38.5	38.9	22.4
PK-203/203M	38.5	38.9	22.4
PK-206/206M	34.4	36	22.4
PK-210/210M	34.4	36	22.4
PK-215/215M	22	32.7	18.5
PK-220/220M	22	32.7	18.5
PK-230/230M	22	32.7	18.5



### Dual Pressure Switch

Unit : mm

Model No.	A	B	C
PK-303/303M	25.4	23.1	87.4
PK-306/306M	38.5	25.4	100.5
PK-606/606M	38.5	25.4	100.5

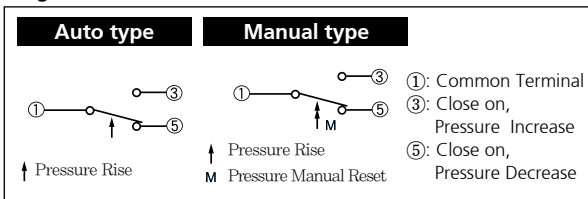


### Electrical Rating

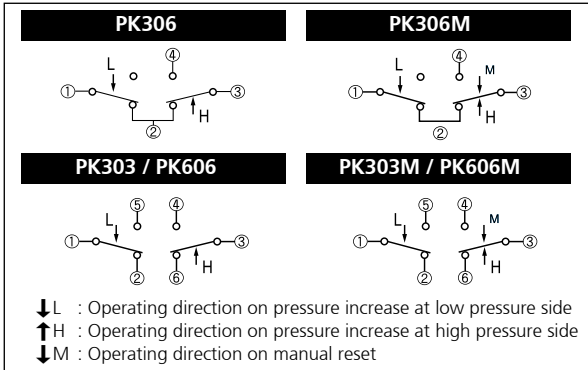
Rated Voltage(V)	AC 125V	AC 250V
Rated Amps(A)	10A	5A
Non-Inductive Current	10A	5A
Full Load	8.5A	4.5A
Starting	40A	20A
Purpose Protection Degree	IP40	IP40

### Contact Function

#### Single

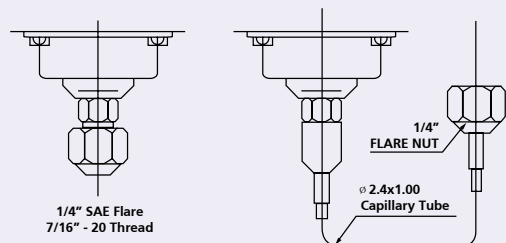


#### Dual



### Common

#### Pressure Connections



Standard

Available upon request

#### Part

